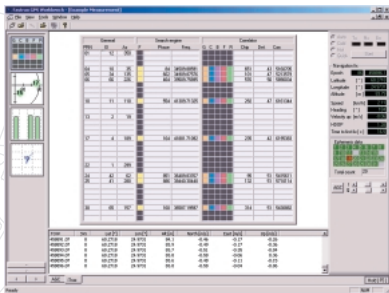
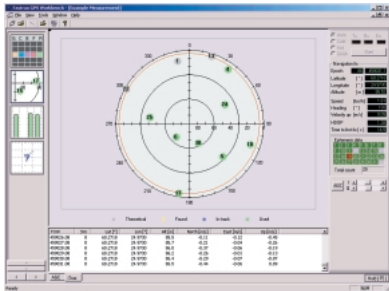


iSuite

Software Development Kit for GPS Applications

Complete software development environment for application specific customization of iTrax02/8 GPS Receiver.



The iSuite delivers versatile built-in GPS functionality and user friendly software development tools, which can be used in conjunction with the iTrax02/8 receiver module. A convenient level of customization can be achieved by simply modifying the configuration setup through the serial port. The iSuite development environment is targeted at clients seeking minimal system re-design, yet achieving application specific software customization enhancements through general purpose processing, in addition to GPS capabilities.

The iTrax02 is a natural platform for the iSuite development tools. Housing a proprietary 16bit, 32MIPS, ultra-low power VSDSP core which not only meets all requirements to implement a full navigational feature set, but also has ample bandwidth and on-chip memory to offer the user a considerable opportunity to embed customer specific firmware. The DSP's RISC-like instruction set and pre-emptive real-time operating systems provide maximum control over both GPS and customer functions.

The Development Package includes:

- ¥ Optimizing C Compiler, Symbolic Assembler, Archiver, Linker, Loader, Profiler and Simulator running in Microsoft Windows /NT/2000 /XP environment.
- ¥ GPS SW Stack.
- ¥ The iSUITE, partly in object format and partly iC source code.
- ¥ Sample C codes for application specific tailoring.
- ¥ Documentation.
- ¥ 2 days training.

Software Development Kit for GPS Applications

The iSUITE features:

VSDSP Software Development Tools

- Optimizing ANSI C-Compiler.
- Assembler, Linker, Optimizer, Archiver, Profiler, Simulator.

VSDSP RTOS

- Pre Emptive Real-Time Operating System for the RISC-like, proprietary 16 bit DSP core.

System Libraries for Task management and Communications

- iSYS – System Library.
- iTALK – Communications Protocol.
- NMEA Protocol.

GPS Workbench

- Built-in basic interface components, data archiving and simulation.
- Possibility to build your own user interface components.
- Flash programming and debugging tools.
- Serial interfaces to application board.

GPS Tracker Software

- Configurable Power Manager for low power applications.
- Ultra rapid signal lock-on. The dedicated hi-speed acquisition engine provides PRN frequency and code phase values for correlator initialization. No need for slow traditional signal search strategies.

GPS Navigation Library

- Extensively configurable.
- Versatile API access.
- Peripherals API - allows access to physical devices such as serial communications.
- Power Management API - allows configuration of the power management scheme.
- Connection API - OEM function hooking to specific events such as navigation state update. OEM-firmware task connection through messaging services and data routing etc.
- Configuration API - allows configuration of the navigation engine behavior: update rate, use of atmospheric models, characteristics of filters, standard output selections etc.
- Utility API - general utility library e.g. for UTC/GPS time transformations, datum transformations etc.

